

|| two stitches ||


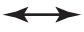

zoe dress

PATTERN SIZE KEY

6-12M
 12-18M - - - - -
 18-24M
 2T
 3T - - - - -

4Y
 5Y
 6Y
 7Y
 8Y
 9Y _____

PATTERN SYMBOL KEY

● PIVOT POINT
 + SEW TO THIS POINT AND STOP
 NOTCH
 GRAIN LINE OF FABRIC
 CUT ON THE FOLD

This pattern is for individual use only. All aspects of this pattern are copyright © Two Stitches Patterns 2018. If you wish to make and sell items from this pattern please contact us for information. Otherwise no part of this pattern may be reproduced in any form.

PRINTED IN THE UK

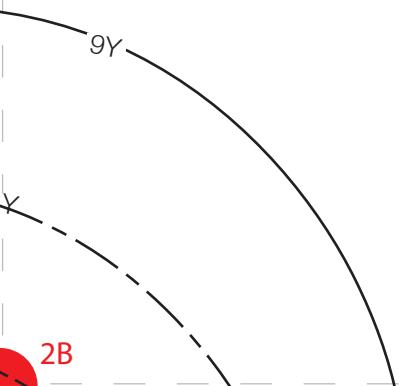
V. 2

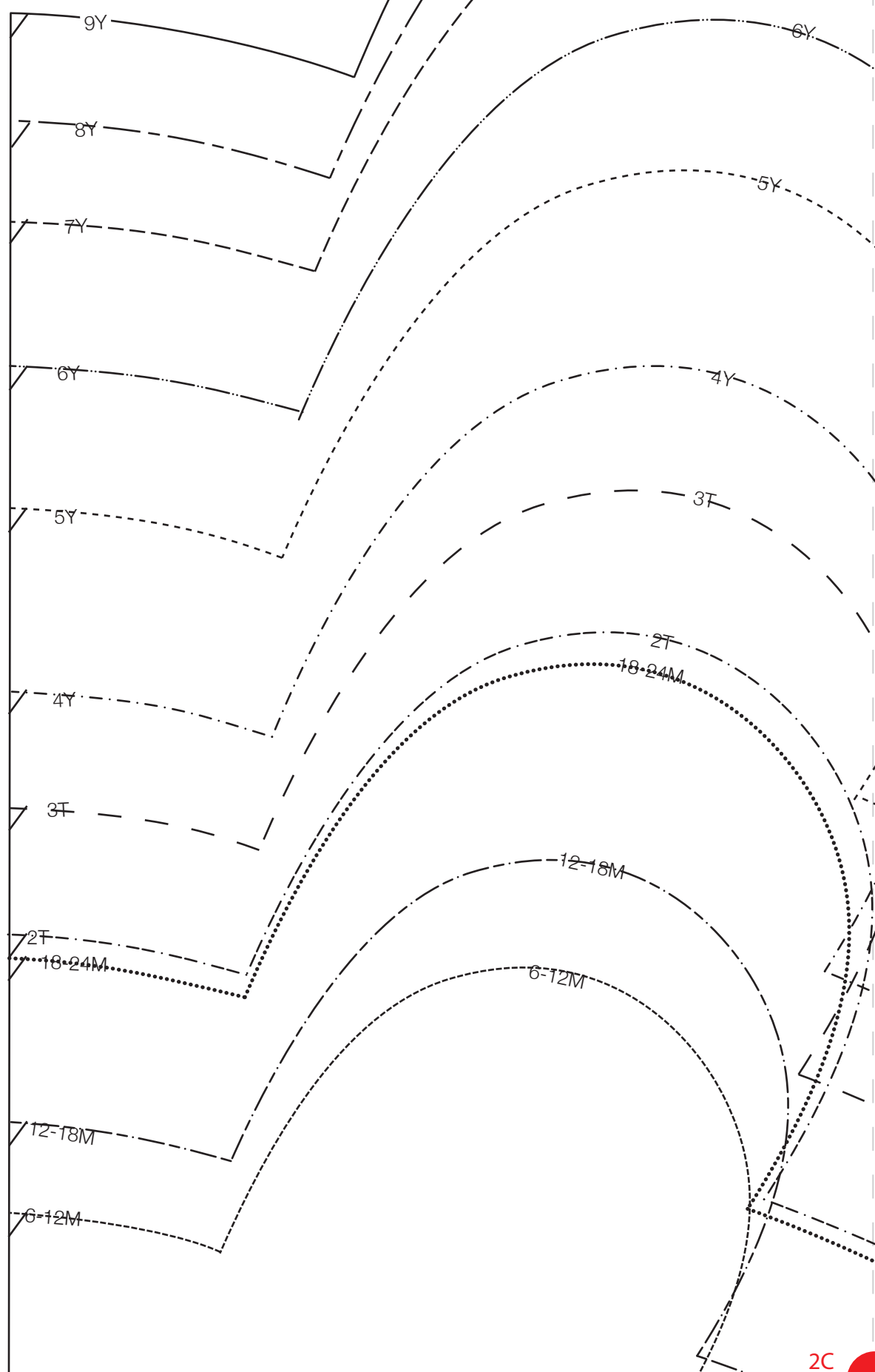
Check your print out
is the correct size!

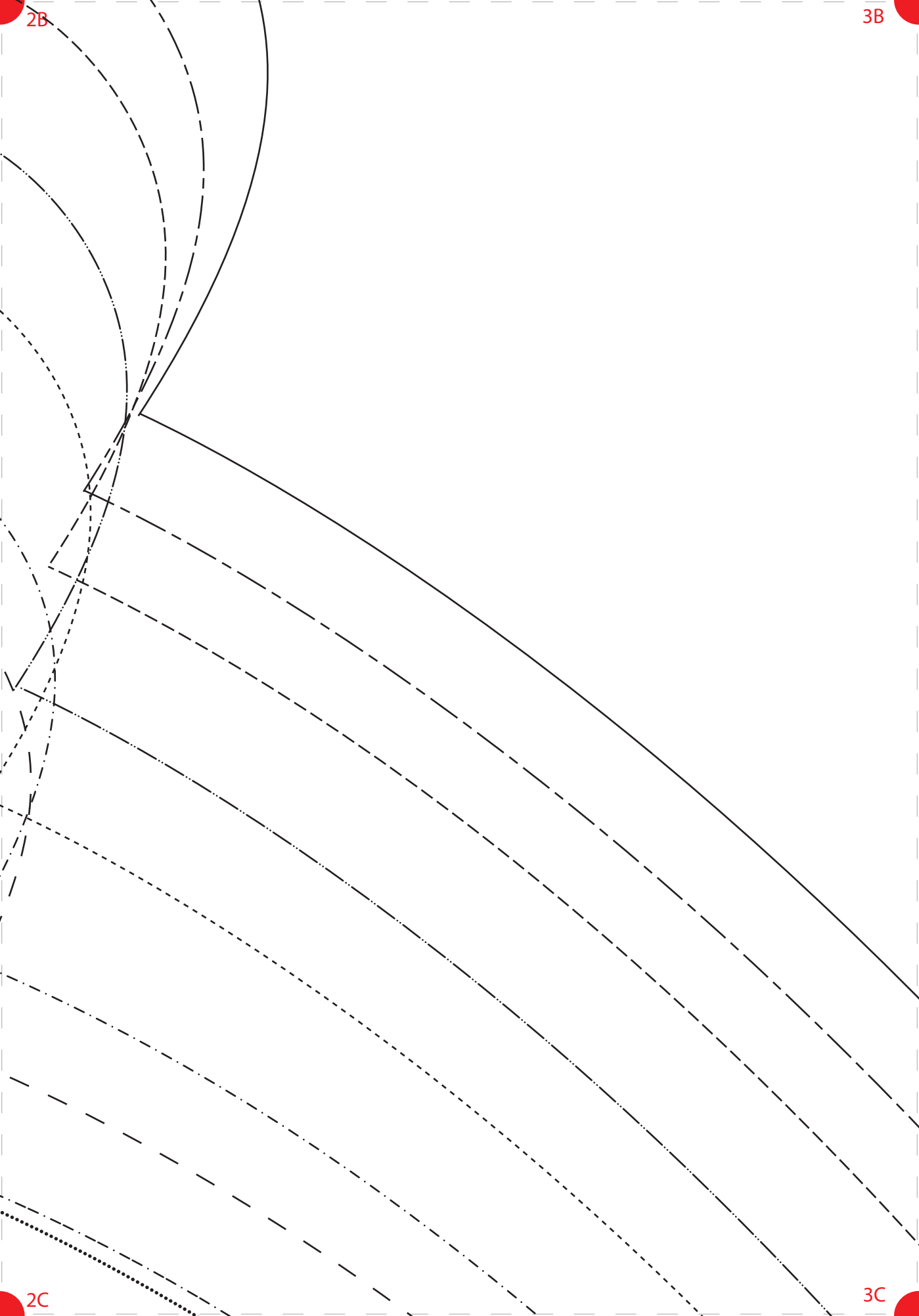
When printed at 100%
this box should measure
5cm x 5cm

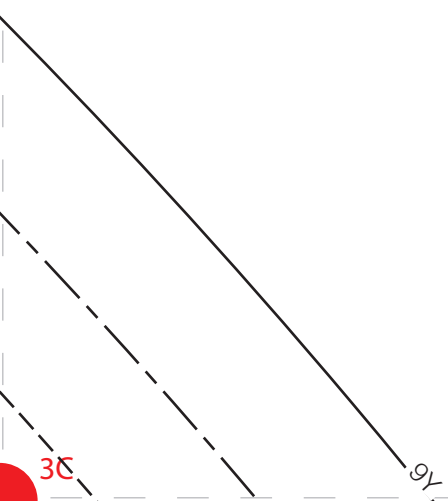
important info

This is a replacement piece B from the original printing of the Zoe Dress. If your original pattern says V. 2 on the information box (above) you do not need to use this piece or change anything.









1C

2C



B
|| two stitches ||

zoe dress

lower front panel
cut 1 on fold

1D

2D

